

TRAINING: SIMULATED EMERGENCY TESTS

HOW WE DO IT IN OREGON

WWW.OREGONARESACES.ORG



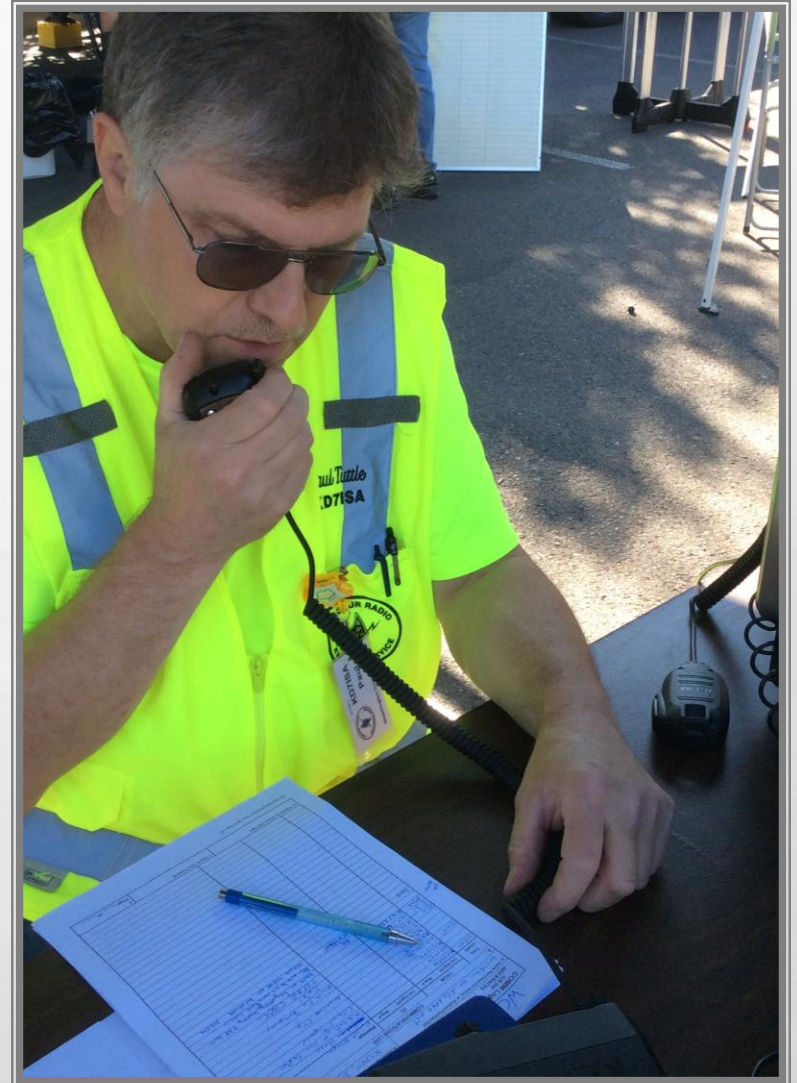
PURPOSE

HANDS ON TRAINING EXPERIENCE

TESTING UNIT & SYSTEM CAPACITY

LEARNING, IMPROVING AND CHALLENGING

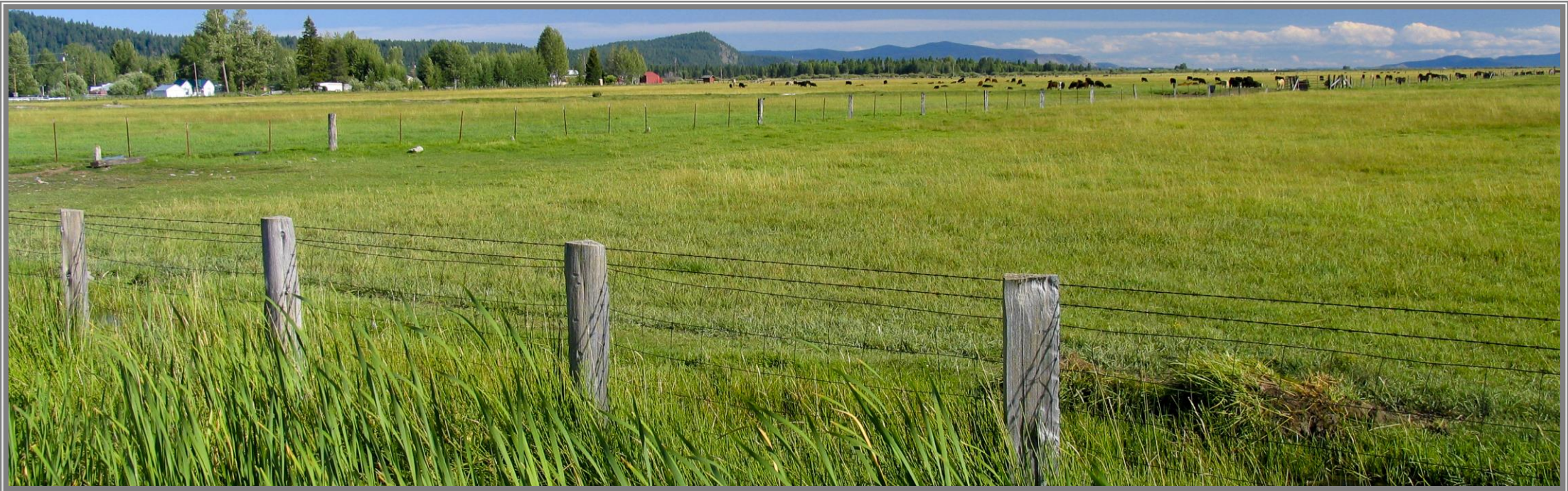
GET A LOT OF PARTICIPATION!



SET ORGANIZATION

- **FIX DATES FAR IN ADVANCE !**
- **REGISTER COUNTY UNITS/AUXCOMM GROUPS**
- **WRITE SET DOCUMENT/SCENARIO 3 MONTHS PRIOR TO THE EXERCISE.**
- **CONSULT ON TRAINING GOALS & COMM. METHODS WITH LEADERSHIP**
- **RECEIVE AND REPLY TO OEM INCOMING TRAFFIC**
- **DEBRIEF, WRITE AARS, FIX PROBLEM, TRAIN!**





SET PLAY: A LOCAL EXERCISE WITHIN THE BROADER STATE EXERCISE

- **EACH COUNTIES DEVELOPS THEIR OWN LOCAL SCENARIO THAT FITS WITHIN THE SET PLAN**
- **EACH COUNTY RUNS THEIR OWN LOCAL NETS, WRITES THEIR OWN TRAFFIC, SEND TRAFFIC TO OEM.**

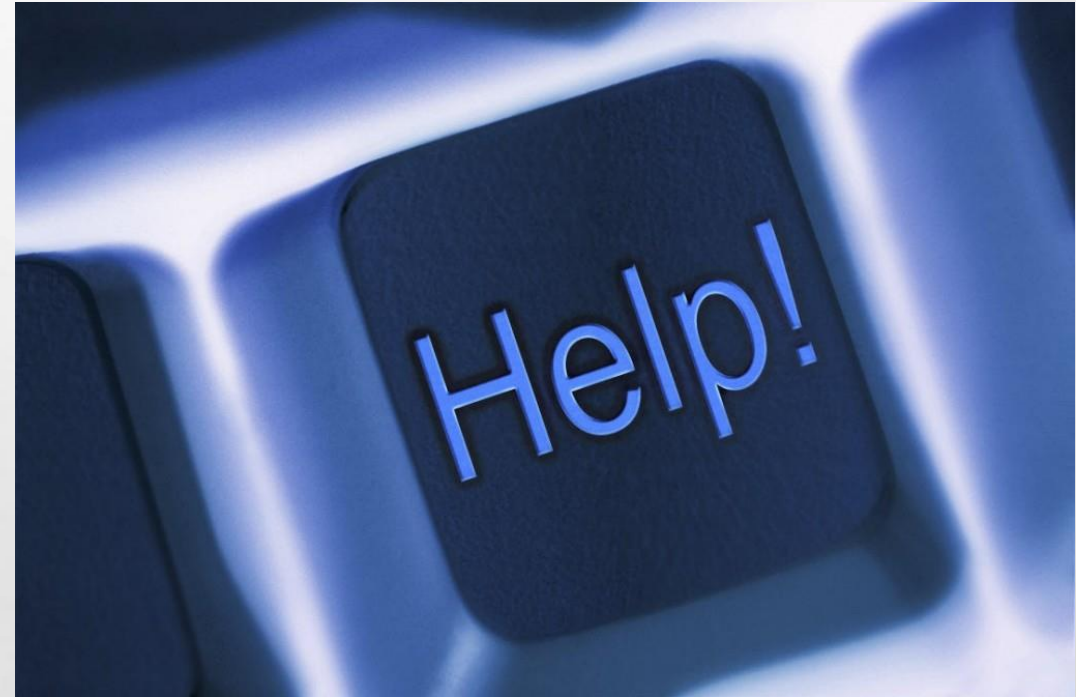
SET CHARACTERISTICS

- **TYPICALLY 15 COUNTIES, STATEWIDE, 135 STATION ON THE AIR**
- **200-300 ARES MEMBERS INVOLVED**
- **LOCAL AND STATEWIDE TRAFFIC EXCHANGE**
- **HEAVY USE OF OUR WINLINK SYSTEM TO LOCAL AND OUT OF STATE GATEWAYS**
- **OEM TYPICALLY RECEIVES 200 MESSAGES IN A 4 HR SET**
- **ALWAYS INCLUDE ACTIVATION, DOE, SITREP, ICS213 TRAFFIC**
- **VERY POPULAR AND IN MANY WAYS DRIVE THE ENTIRE PROGRAM**



WHO PLAYS ?

- **PARTICIPATION IS OPEN TO AUXILIARY COMMUNICATIONS GROUPS AFFILIATED WITH OR SPONSORED BY GOVERNMENT AGENCIES OR THOSE AGENCIES THAT WOULD BE ACTIVE DURING A DISASTER. THIS INCLUDES ARES/RACES, CERT TEAMS, NGO, HOSPITALS, PUBLIC UTILITIES, RED CROSS AND OTHERS.**
- *OREGON EMERGENCY MANAGEMENT POLICY*



PARTICIPATING GROUPS

- **ARES UNITS, STATEWIDE**
- **CITY EOC (GRESHAM, BEAVERTON, TIGARD, PORTLAND)**
- **HOSPITALS & MEDICAL FACILITIES (ABOUT 11)**
- **CERT TEAMS IN WASHINGTON, MARION, LINN**
- **ACS IN LINCOLN COUNTY**
- **OREGON DEPT. TRANSPORTATION**
- **COMMUNITY COLLEGES (ABOUT 3)**
- **RED CROSS PORTLAND; OREGON FOOD BANK, TVF&R**
- **PORTLAND GENERAL ELECTRIC**
- **WASHINGTON, IDAHO & CALIFORNIA ARES**



RECENT OREGON ARES SETS

SHAKE EX: SPRING 2011

SUN SET SOLAR STORM: FALL 2011

PORTLAND AREA EARTHQUAKE : FALL 2012

MARS ATTACKS : SPRING 2013

HACK ATTACK REGIONAL SET: FALL 2013

ASH EX: FALL 2014

QUAKE EX I : SPRING 2015 (FULL DAY)

COMING : QUAKE EX II : OCTOBER, 2015 (FULL 2 DAYS)



SPRING, 2016: OREGON – WASHINGTON FEMA EXERCISE



CASCADIA EMERGENCY SUPPORT FUNCTION 2: COMMUNICATIONS

- **OEM COMMS WITH THE COUNTY EOCS**
- **TACTICAL COMMS WITH :**
 - **SAR GROUPS, STAGING AREAS, ISOLATED COMMUNITIES, HOSPITALS, SHELTERS, TRANSPORT ASSETS**
 - **SUPPORT LOGISTICS TO RELIEF ASSETS**
- **INTEGRATE ARES, MARS, CERT, ACS COMMS**



ESF-2 TASKS : FEMA/OEM

- **ACTIVE NETS AND EOCs. ORGANIZE / COORDINATE OPERATIONS**
- **LIFE SAFETY:**
 - **ESTABLISH COMMS INTO IMPACTED AREAS AND FIRST RESPONDERS.**
 - **EXPAND COMMS TO TRANSPORT ASSETS (EMS, SAR, OTHERS)**
 - **PROVIDE TACTICAL COMMS WITH SHELTERS AND MEDICAL TEAMS**
 - **ESTABLISH/PROVIDE COMMS TO LAW ENFORCEMENT**
- **DAMAGE ASSESSMENT:**
 - **VERIFY COMMS TO OPERATION CENTERS IN AFFECTED AREAS; RELIABILITY AND CAPACITY.**
 - **ESTABLISH COMMS WITH HOSPITALS AND EMS SERVICES**
 - **IDENTIFY COMM CAPABILITIES TO SUPPORT PUBLIC MESSAGING**



EFS -2 TASK, CONTINUED

- **MASS CARE / SHELTER / MEDICAL**
 - **ESTABLISH & MAINTAIN ALL SHELTER COMMS**
 - **PROVIDE COMMS TO IMPROVISED SHELTERS IN ISOLATED AREAS**
 - **PROVIDE COMMS TO MEDICAL TEAMS IN AFFECTED AREAS**
- **LOGISTICS**
 - **MAINTAIN COMMS TO STAGING AREAS**
 - **SUPPORT RESPONSE AND RECOVERY OPERATIONS**
 - **NOTE: ALL TRANSPORT OPERATIONS WILL REQUIRE TACTICAL COMMS**
- **PLANNING / PRIORITIZATION**
 - **IDENTIFY UNMET COMM NEEDS AND RESOLVE THEM**



WHAT WORKS

- **GENERATE AND SEND A LOT OF TRAFFIC !**
- **MAKE GROUPS THINK ABOUT HOW THEY WOULD ACCOMPLISH THE TASK**
- **AND WHAT THEY WOULD DO IF THE EVENT ACTUALLY HAPPENED**
- **WORK WITH OTHER AUXCOMM GROUPS IN THEIR COMMUNITIES**



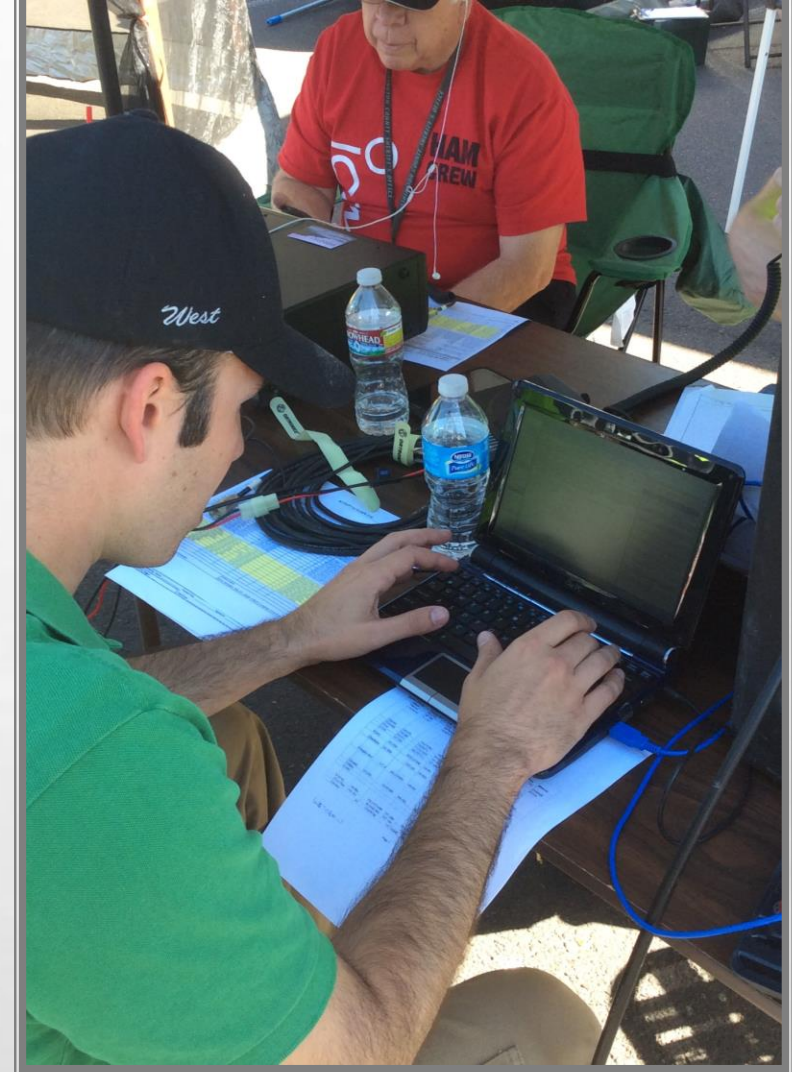
WHAT DOES NOT WORK

- **FAILURE TO REPLY TO INCOMING TRAFFIC**
- **NOT KEEPING OPERATORS VERY BUSY !**
- **LOCALIZED SCENARIOS THAT DON'T APPLY STATEWIDE**
- **INSUFFICIENT LEAD TIME**



THE FUTURE OF SETS

- **GREATER INTEGRATION OF EMERGENCY MANAGERS INTO OUR SETS**
- **BUILDING RELATIONSHIPS WITH PARTNER EMCOMM GROUPS**
- **REGIONAL SETS TO BUILD PARTNERSHIPS IN NEIGHBORING STATES**
- **CONTINUING AN ACTIVE SET PROGRAM – NO BACKSLIDING!**
- **TRAIN, TRAIN, TRAIN...**



FOR MORE INFORMATION:

WWW.OREGONARESACES.ORG

